



European Cargo Logistics

2017

Guidelines for the safe loading of paper products



European Cargo Logistics GmbH

11.01.2017/mmr

All transports carried out on behalf of European Cargo Logistics GmbH must comply with legal regulations, especially VDI-Guideline 2700 ff. Complementing the DEKRA-Brochure „ Safe and secure loading of paper products “ Version 6 12/2013 the following requirements and technical specifications have been set and must be adhered to before the loading of your vehicle.

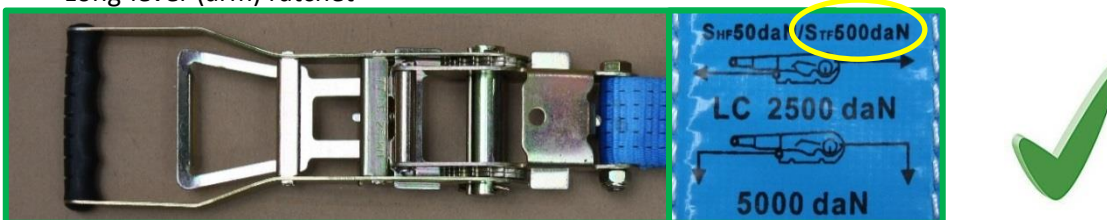
BELTS AND RATCHETS

Paper reels are generally secured by the use of lashing restraints. The type and amount of the belts/ratchets used is dependent on the prescribed preload force necessary. It is vitally important that all vehicles are equipped with a sufficient number of lashing points. It is highly recommended that the applied trailer have trough securing holes in the outer frame.

These should have the following properties:

- Long-lever (arm) ratchet / EN 12195
- Standard tension force (STF) = 500 daN
- Lashing capacity LC \geq 2500 daN
- Elongation \leq 7%

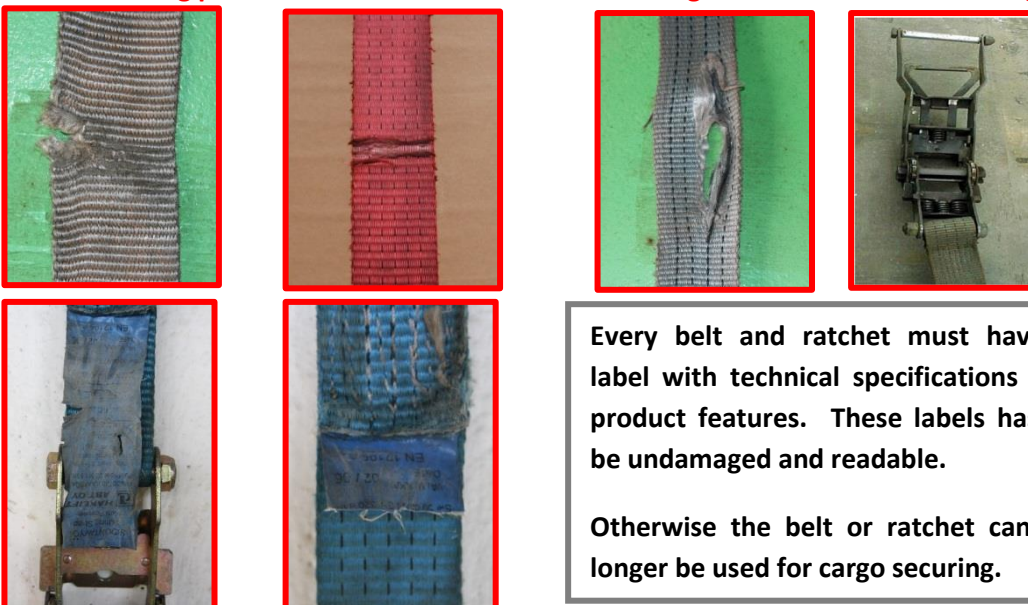
Long-lever (arm) ratchet ***



Short-lever (arm) ratchet



The following photos shows material which can no longer be used for load securing.



Every belt and ratchet must have a label with technical specifications and product features. These labels has to be undamaged and readable.

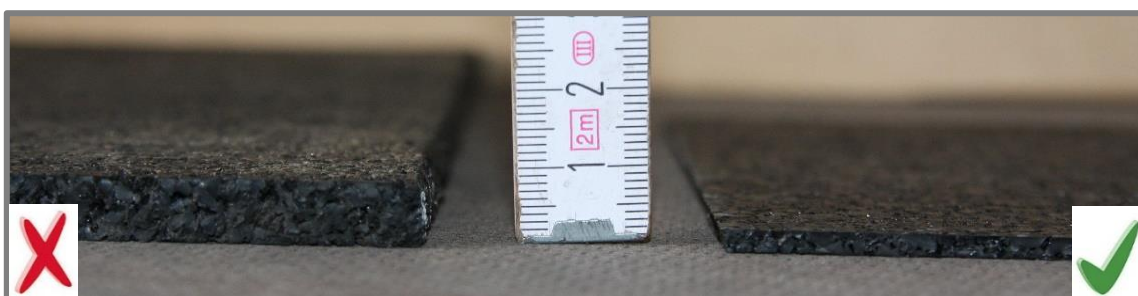
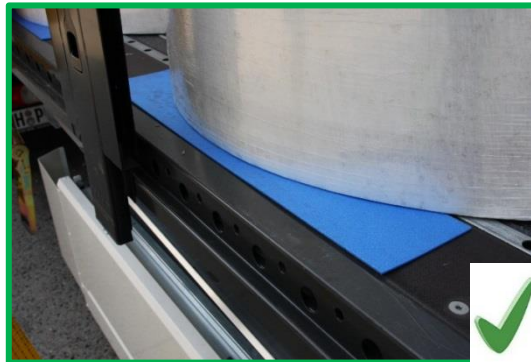
Otherwise the belt or ratchet can no longer be used for cargo securing.

NON-SLIP MATERIALS

These should have the following properties

- A certified sliding friction coefficient $\geq 0,6 \mu$
- Dimensions
 - Length = adapted to the reel diameter
 - Width ≥ 150 mm
 - Height = 3 mm
- undamaged and clean

The multiple use of non-slip materials must be certified by the manufacturer.



EDGE PROTECTORS

The six different edge protectors below listed are mandatory for all paper reels transports with trailers in Europe. No other edge protectors will be accepted until further notice.

The list has been compiled by ECL drawing upon the knowledge built up over many years of cargo securing and damage prevention. ECL reserves the right to remove or to add further products!

TRANSPORT-TECHNIK GÜNTHER ***

Product name:

Kantenschützer KS ABS/ PC 185x145x150 mm

Art.no: KS 1000

Contact details for commercial contacts:

Transport-Technik Günther GmbH & Co. KG

Derchinger Str. 125

86165 Augsburg, Germany

Email: info@transport-technik.de

Phone: + 49 821 543 788 40

www.transport-technik.de



MIKO PLAST AS

Product name:

Miko Edge Protector HD™

Art.no: KB-374-003

Contact details for commercial contacts:

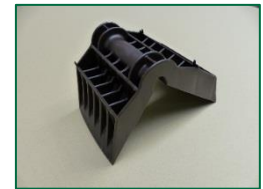
Miko Plast AS

Kongsvein 94

1177 Oslo, Norway

Email: post@miko-plast.com

Phone: + 47 23 38 47 73



TRANSPORT-TECHNIK GÜNTHER

Product name:

Kantenschützer KS PP 185x145x150 mm

Art.no: KS 1005

Contact details for commercial contacts:

Transport-Technik Günther GmbH & Co. KG

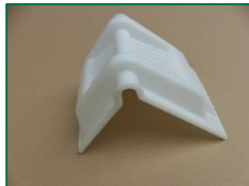
Derchinger Str. 125

86165 Augsburg, Germany

Email: info@transport-technik.de

Phone: + 49 821 543 788 40

www.transport-technik.de



TRANSPORT-TECHNIK GÜNTHER

Product name:

Kantenschützer KS PP 190x150x160 mm

Art.no: KS 1015

Contact details for commercial contacts:

Transport-Technik Günther GmbH & Co. KG

Derchinger Str. 125

86165 Augsburg, Germany

Email: info@transport-technik.de

Phone: + 49 821 543 788 40

www.transport-technik.de



SANUBE

Product name: **PaperMAX**

Art.no: 14216011

Contact details for commercial contacts:

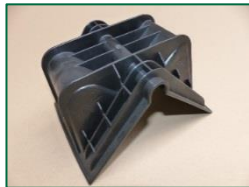
Sallaberger Nutzfahrzeugbedarf

Hartwagen 12, A-4776 Diersbach

Email: office@sanube.at

Phone: +43.7766/ 20500

www.papermax.info



SPANSET GMBH & Co. KG

Product name: **KaSIPlus**

Art.no: D055985

Contact details for commercial contacts:

SpanSet GmbH & Co. KG

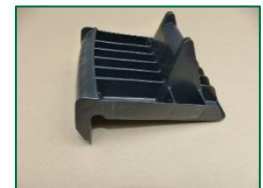
Attn.: Jörg Houben

Jülicher Str. 49-51, D-52531 Übach-Palenberg

Email: info@spanset.de

Phone: + 49 (0)2451-4831-0

www.spanset.de



*** These materials for the safe loading of paper products can be purchased in our loading ports Lübeck and Rostock.