

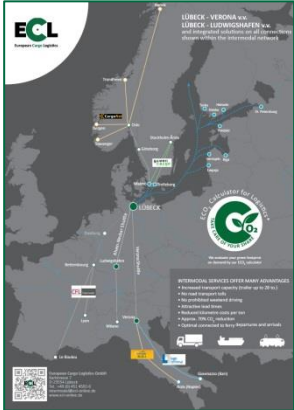
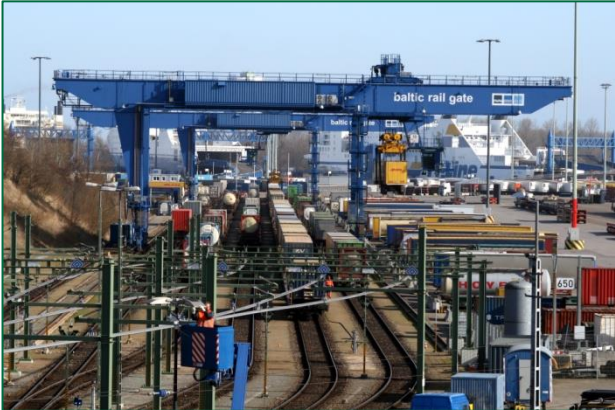
Paper and Forest  
Product Logistics  
Intermodal Services  
General Forwarding



Company Newsletter  
I 2017

March 2017

## New Intermodal Links: Southern Italy for Containers



At the beginning of 2017, we expanded our intermodal network by including 2 links to the south of Italy. In cooperation with the Italian terminal and intermodal transport operators “LUGO Terminal” and “N.O.I. Nuovo Operatore Intermodale”, ECL is offering onward transport by rail to Giovinazzo near **BARI** and to Nola in the vicinity of **NAPLES** for all types of container in combination with our “Verona Shuttle” with daily links between Lübeck and Verona.

This cooperation and the further development of our intermodal network represents another milestone of our integrated “one-stop shop” solutions.



For further information, please contact Mr. Tobias Behncke (Head of Intermodal Services) by calling +49 (0) 451 4502 - 108 or via email to [tobias.behncke@ecl-online.de](mailto:tobias.behncke@ecl-online.de) or send your booking inquiries directly to: [intermodal@ecl-online.de](mailto:intermodal@ecl-online.de)

## ECL donation for children's and youth centre



The ECL Christmas donation for 2016 went to an open children's and youth centre project called "Bauspielplatz Roter Hahn e.V., Geschichtserlebnisraum Lübeck" (Red Rooster Adventure Playground, Lübeck Historical Adventure Area).

Frank Thomas, a member of the socio-educational staff at the centre, was delighted to receive the donation cheque from ECL Managing Director Jörg Ullrich and our colleague Ursel Steen.

What began in 1999 as a classic playground with one single site trailer has now developed, as an out-of-school place of learning, into a unique adventure area to experience the medieval history of Northern Germany.

"A powerful project and extraordinary guidance towards a positive future for the children and young people from Lübeck and the surrounding area. We are delighted that our donation will help to support the impressive work carried out by the centre and its staff", said Jörg Ullrich.

## IHATEC: on the way to Port 4.0



The Federal Ministry of Transport and Digital Infrastructure (BMVI) provides support for research and application-oriented development projects related to innovative port technologies under the IHATEC support programme. Total funding of €64 million has been made available for this. We have submitted a project application in conjunction with Lübecker Hafengesellschaft mbH (LHG) as the leader of the consortium.

The project is named "MISSION" and is concerned with the development of an innovative information management system in marine transport chains for the purpose of optimising transshipment and transport processes. To realise the project, we will incorporate our many years of practical experience in several work packages. A decision by the Ministry on the support funding requested is expected soon.

## Signs of good cooperation with Russia



On the occasion of the annual “Russian Logistics Day”, logistics experts from St. Petersburg visited the Hanseatic City of Lübeck at the invitation of the Lübeck Forwarders Association (VLS) and Lübecker Hafen-Gesellschaft mbH (LHG). The Mayor of Lübeck, Bernd Saxe, welcomed the delegates at a reception held at City Hall. In addition to a representative of the Chamber of Industry and Commerce for the St. Petersburg Region and a government representative, the group of visitors also included the Global Ports operators as well as the forwarding companies Arivist and Baltica Trans. Following a tour of the port facilities, a discussion event was held at the Ostpreussenkai terminal in the evening, to which, among others, representatives of shipping lines, VLS and the customs authority, as well as the Harbour Master were invited. LHG Managing Director Sebastian Jürgens focused his presentation on the subject of the quality of handling and, in doing so, initiated a lively discussion among those attending.

(Author and photo: LHG/Natascha Blumenthal)

## ECL with new representative office in Italy



We have maintained close economic ties with Italy for many years now. So the decision to establish a representative office in Italy was a very easy one.

Since November 2016, we have been represented in Italy by Mr. Leo Herze. With his many years of experience and outstanding knowledge of the sector, Leo Herze will use his extensive network to make our services even better known in Italy. One of the points of focus is the direct marketing of our containers being unloaded in Italy to obtain return loads in the direction of Russia. Mr. Herze has worked, among

other things, as General Manager of the Italian subsidiary of Nordwaggon and of Rail Cargo Italia Srl and, 10 years ago, he set up the company Log-Man International Srl, which he still heads as Managing Director. The new representative office in Italy will provide us with helpful support in strengthening and expanding our existing transport services to and from Italy.

Contact: [leo.herze@ecl-online.de](mailto:leo.herze@ecl-online.de)

## May we please introduce - the MAXIMA!



(Photo: Karl Arne Richter)



The “MAXIMA” is truly majestic. The “workhorse” of Nordic Rail Service GmbH (NRS), a sister of ECL within LHG group. She pulls up to 3,500 tons without batting an eyelid. Railcars loaded with mass or bulk goods are her speciality. MAXIMA is one of six diesel locomotives at the disposal of our affiliated company for transport and shunting operations. As a rail transport company, NRS provides traction services at regional and national level, train composition for national and international trains, shunting services at local and regional level, as well as transfers to its own railcar workshop. Together with ECL, comprehensive solutions are also offered for multimodal transport or storage.

Can MAXIMA also do something for you?

Please contact [philip.kiess@nordic-rail-service.de](mailto:philip.kiess@nordic-rail-service.de)

## Heavy goods transport on the way to Russia



ECL has delivered an interesting load from Austria to St. Petersburg via the Port of Lübeck. We organised and handled the transportation of an injection moulding machine produced in Austria. The largest part to be transported weighted in at 55 tons and was 4 metres wide. The machine parts arrived in Lübeck on schedule after a 4-day journey

in a three truck convoy. In the Port of Lübeck, the machine parts were reloaded onto MAFI's and, after completion of all the customs formalities, then transported further to St. Petersburg on a ferry by shipping company Finnlines.



## About our trainees



On 23 January 2017, Melanie Meins passed her final examination at the Lübeck Chamber of Industry & Commerce to qualify as a specialist in forwarding and logistics services clerk following a fast-track training period. The ECL team herewith congratulate her on this fine achievement. Ms. Meins will continue to actively assist us and has been assigned duties in the General Forwarding Department. We wish her maximum success and lot of enjoyment in her work.

We would like to welcome Lina-Maria Pooch as a new member of our trainee pool. Ms. Pooch is already in her 2<sup>nd</sup> year of training. Due to her previous training organisation changing location, Ms. Pooch will continue her training at ECL. We are delighted that Lina-Maria Pooch has chosen us and hope she will feel at home here.



## New starts and company anniversaries

### 10-year company anniversary:

**04.12.2016:** Sabine Strunck (Lübeck)

### Commencement of training at ECL:

**01.03.2017:** Lina-Maria Pooch (Lübeck)





TransRussia from 18-20 April 2017

Moscow – Expo Crocus – Pavilion 1 – Booth A305

We look forward to seeing you there

**Dmytro Grybkov** (General Director OOO ECL Rus) and

**Arthur Petrosyan** (ECL Lübeck Transport Services for  
CIS Countries, Caucasus, Iran)



We look forward to seeing you there:

**Jörg Ullrich** (Managing Director)

**Tobias Behncke** (Head of Intermodal Services)

**Timo Berg** (Head of Sales & Business Development)

**Ronny Müller** (Sales & Business Development)

**Arthur Petrosyan** (Transport Services for CIS countries, Caucasus, Iran)

**Dmytro Grybkov** (General Director OOO ECL Rus)

**Leo Herze** (Representative Italy)

**Philip Kiess** (Sales Manager at NRS)

## Impressum:

Managing Director: Jörg Ullrich - Juris diction: Luebeck HRB 4674 - Internet: [www.ecl-online.de](http://www.ecl-online.de)

European Cargo Logistics GmbH - Karlstraße 7 - 23554 Luebeck GERMANY

Legal notice: <http://www.ecl-online.de/de/impressum/index.html>

If you wish to unsubscribe from this newsletter, please send an email to [martina.meier@ecl-online.de](mailto:martina.meier@ecl-online.de)

Public Relations: Martina Meier - Phone +49 (0) 451 4502 113 Photos: Karl Arne Richter, LHG und ECL