



AUTUMN 2022

# NEWSLETTER



The official Newsletter of European Cargo Logistics GmbH

## CONTENTS OF THIS ISSUE:

### News from the different areas:

- **Intermodal transport**
- **General forwarding**
- **Paper and forest product logistics**
- **This and that from our affiliated company NRS**
- **ECL-News**
- **From the ECL family**

## THE GOLDEN AUTUMN

**...is the most beautiful and colourful smile of the year**

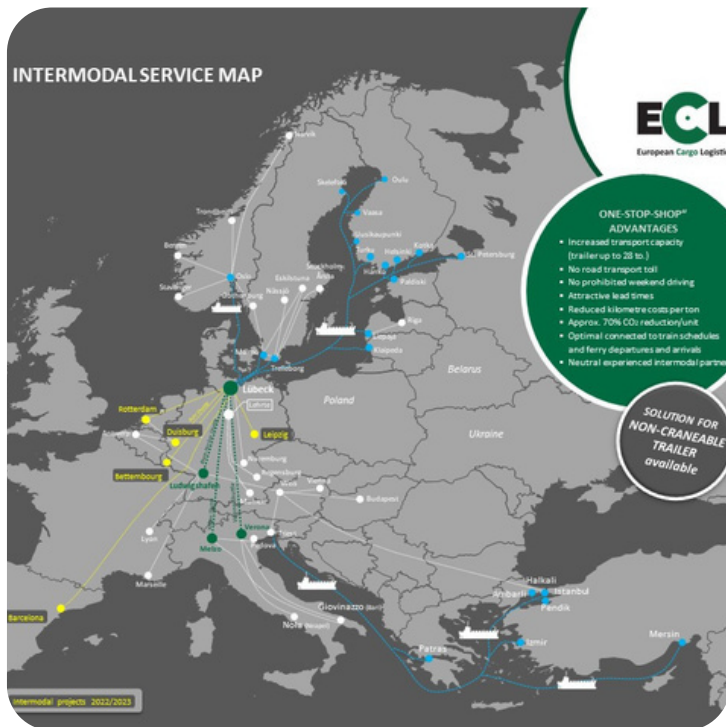
And for this reason, we would like to enrich your day a little with some pleasant news and inform you again about current developments in our logistics services in this edition of our newsletter. These includes our planed intermodal shuttle connections to Leipzig and Rotterdam, which are scheduled to start in spring 2023. We would also like to tell you about some exciting transport projects, some of them even intercontinental. If you would also like to see some pictures in motion of us, we recommend our own YouTube channel to discover the new videos.

Of course and as usual, we offer you the regular insights of our ECL family. A lot has happened here again. We hope you enjoy it.





## INTERMODAL TRANSPORT



### NEW INTERMODAL SHUTTLE CONNECTIONS IN PLANNING

We are constantly in the process of expanding our "One-Stop-Shop" network even further. For this reason, two new shuttle connections are under construction for 2023. The new shuttle connections should connect Leipzig and Rotterdam with the port of Lübeck. Three departures per week are planned in each direction on both lanes. This is our response to the high demand for capacity and reliable intermodal transport within Germany and Europe.

You will also find further information in the near future at <https://www.ecl-online.de/en/leistungen/intermodale-verkehre/index.html> or feel free to contact us directly.

### NEW TRANSPORT MANAGEMENT SYSTEM: POSITIVE INTERIM CONCLUSION

As already reported, we have decided to upgrade our *Transport Management System (TMS)* in the course of digitalisation and process optimisation. The implementation for our several departments is ongoing under construction and the GO

LIVE is expected for the first quarter of 2023. Now it is time to draw a first interim conclusion - and it is a very positive one. The improved analysis tools and the streamlined booking processes will significantly simplify the process for us, but also for our clients. The new TMS also gains further advantages. Optimised status messages of the individual cargo units, for example, will lead to easier and more successful communication between the customers, the individual service providers and us. We look forward with anticipation to the full potential of the new TMS.







## GENERAL FORWARDING FROM VILJANDI TO RÜGEN - WHEN THE HOUSE IS MOVING WITH IT

We are always happy about the "peculiarities" in everyday life. This also includes unusual transport goods from time to time, which we would like to tell you about in this article.

In August we used three trailers of the ECL fleet to transport a so-called "Tiny House" from Viljandi in Estonia to Trent on the island of Rügen in Germany.

The route started with a ferry transfer to the terminal Skandinavienkai in the port of Lübeck, before the journey continued by road to Rügen. Once at its destination, the Tiny House was unloaded and positioned with the help of a crane.



**ECL - EVEN CLEVERER LOGISTICS**





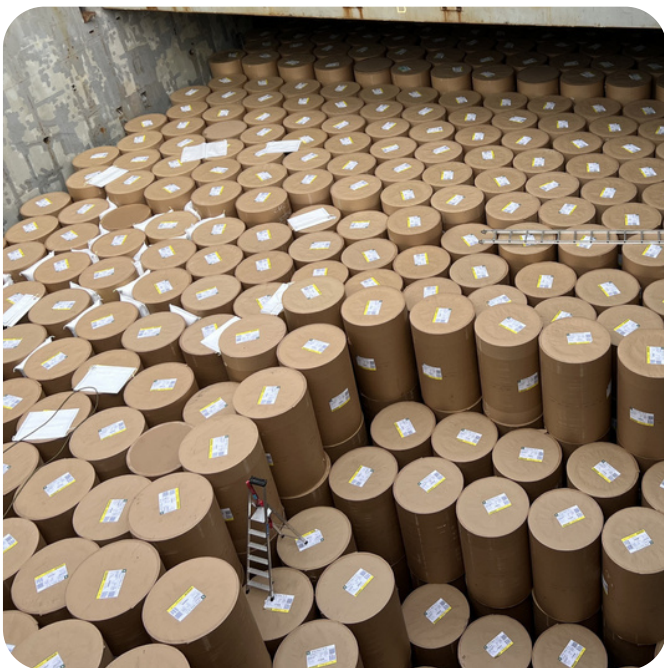
## PAPER AND FOREST PRODUCT LOGISTICS

### MEGA-TRANSPORT FROM ROSTOCK TO MELBOURNE

However, bigger is possible - much bigger. On 1st of September, the loading of the mighty General Cargo ship "PALEISGRACHT" of the Spliethoff shipping company began in the port of Rostock. Loaded were numerous tons of paper produced by our business partner UPM, one of the world's leading paper manufacturers from Finland. The transport route leads from Rostock among other places, across the Atlantic Ocean and the Indian Ocean to the destination port of Melbourne in Australia. The estimated duration of the journey is about two months. Such a mega-transport requires a good team and well-coordinated business partners.



ECL was mainly responsible for the coordination of the more than 400 wagon and truck arrivals as well as the preparation of the loading documents. But we were also responsible for checking the damaged rolls for system processing, which is important for correcting the customs declaration in the event of weight changes, and for preparing the shipping note.



**ECL - EVEN CLEVERER LOGISTICS**





## THIS AND THAT FROM OUR AFFILIATED COMPANY NRS

### REVIEW: TAG DER SCHIENE 2022



On 16th and 17th of September from 10 a.m. to 6 p.m., our sister *NRS* welcomed numerous railway fans to the "German railway days 2022". There were several attractions around the wagon workshop.

The *NRS* wagon workshop was an entry and exit point on the Lübeck Port Authority's journey with the traditional locomotive "Nohab" and its passenger coaches from the 1960s. Passengers and other visitors were able to see the 2-way Unimog in action and admire the *NRS* and *DB Cargo* locomotives. But the highlight was definitely the ride in the shunting locomotive Köf of *NRS GmbH*. Children in particular were able to experience the locomotive driver live.

The *NRS* presented itself together with the *ECL*, *LHG* and *DB Cargo* under the motto "Rail jobs that inspire". The aim was to give visitors an understanding of the possible job and training opportunities in this industry.

If you missed this year's "German railway days", you can already make a note for 15th and 16th of September 2023. The next "Tag der Schiene" will then take place in Lübeck. We are already looking forward to it!



**ECL - EVEN CLEVERER LOGISTICS**



## ECL-NEWS

### NEW DOCUMENTATION: HAFEN IN LÜBECK - EUROPAS GRÖSSTER FÄHRHAFEN

A few days ago, the highly frequented YouTube channel "Real Stories Deutschland" published a documentary about the Port of Lübeck entitled "Hafen in Lübeck - Europas größter Fährhafen". It is worth taking a look at the documentary. You can find the video here: [https://www.youtube.com/watch?v=RnOSW0kPBRs&list=RDCMUCcHMudRg3\\_xhJfTGDSRIx1w&index=3](https://www.youtube.com/watch?v=RnOSW0kPBRs&list=RDCMUCcHMudRg3_xhJfTGDSRIx1w&index=3)

The videos on our own YouTube channel "ECL GmbH" are also highly recommended. There are new impressive videos to discover here at regular intervals. The topics range from the workplace to work processes in the port. You can find the YouTube channel at <https://www.youtube.com/channel/UCLHe4a3LjZVaGYraRvB-kQw>

Simply subscribe and you won't miss anything in the future.



### ALWAYS UP-TO-DATE: FOLLOW US ON SOCIAL MEDIA

If you are interested in more information besides our YouTube channel and don't want to miss the latest activities, news, dates and events of *European Cargo Logistics GmbH*, then simply follow us on social media:

*LinkedIn:* <https://de.linkedin.com/company/european-cargo-logistics-gmbh>

*Facebook:* <https://www.facebook.com/EuropeanCargoLogistics/>

*Instagram:* [https://www.instagram.com/ecl\\_online/](https://www.instagram.com/ecl_online/)

*Xing:* <https://www.xing.com/pages/eclgmbh>

Simply subscribe and you won't miss anything in the future.

**ECL - EVEN CLEVERER LOGISTICS**





## FROM THE ECL FAMILY...

### New faces

We are always happy to see new faces in the company. Therefore, we welcome our new apprentices *Florian Fütterer* and *Mats Christesen*, who started their apprenticeship at our headquarters in Lübeck-Travemünde on 1st of August.

*Frieder Dambrowsky* also started his apprenticeship at our Rostock branch on 1st of September. We wish all three of them a successful journey with us.



### Congratulations

We are pleased to announce that *Tobias Behncke*, Head of Intermodal Services, has been appointed Authorised Officer of *European Cargo Logistics GmbH* with immediate effect.

In addition, *Katrin Westmann*, Head of Department General Forwarding, FTL, LTL, Contract Logistics Paper & Wood, was granted power of attorney. Both were preceded by the approval of the Supervisory Board and the Works Council.

There is also news to announce in this respect at our sister company *NRS*. *Philip Kiess* and *Thomas Toschka* have also been appointed authorised signatories of *Nordic Rail Service GmbH*.