



SUMMER 2022

NEWSLETTER



The official Newsletter of European Cargo Logistics GmbH

CONTENTS OF THIS ISSUE:

News from the different areas:

- **Intermodal transport**
- **General forwarding**
- **ECL-News**
- **Upcoming events**
- **From the ECL family**

COMPLICATED TIMES

...require innovative solutions

Strikes at ports and in factories, congestion of container ships due to the Corona pandemic, the Ukraine conflict, climate catastrophe, oil price developments and a shortage of lorry drivers - the logistics industry really doesn't have it easy at the moment. And we, too, are struggling with the current circumstances. All the more reason for us to share some good news from our company with you.

For example, our fleet expansion of CT trailers continues to progress. In addition, our parcel online shop "Smart-Express" received an award in the field of Green Logistics. Of course, news from the ECL family should not be neglected either. We hope you enjoy reading this issue.



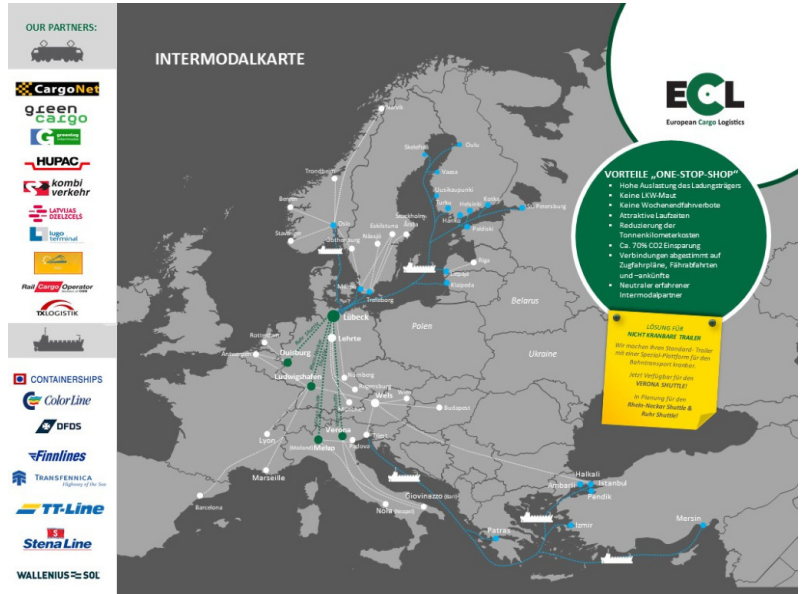


INTERMODAL TRANSPORT

EU-WIDE SHORTAGE OF TRUCK DRIVERS: COMBINED TRANSPORT AS AN ALTERNATIVE

What started in 2021, mainly as a result of the Brexit in the UK, is now affecting the entire pan-European freight forwarding industry: a significant shortage of truck drivers. There is a shortage of around 600,000 drivers in Europe. The main reason: there are clearly too few young drivers. In addition, the shortage of truck drivers is further aggravated by the war in Ukraine. The problems are complex, but one solution seems all the simpler: intermodal transport. With our "ONE-STOP-SHOP" network, we offer regular piggyback connections to the most important industrial areas in Europe with our own shuttle trains.

At the same time, we save approx. 68% CO2 compared to conventional road transport. For more information, please visit <https://www.ecl-online.de/de/leistungen/intermodale-verkehre/index.html> or contact us directly.



GENERAL FORWARDING

CT TRAILER: RENEWED EXPANSION OF THE FLEET

We are also using 2022 to grow our own CT trailer fleet. Another expansion will increase the ECL fleet to 20 trailers. Additional CT trailers are also in the pipeline.

The CT trailers are used throughout Europe, but especially for trailer transport between Switzerland, the Netherlands, Belgium, France and Germany to Estonia v.v. as well as for transport within Germany. You can find more information on our website or contact us directly.





ECL-NEWS

PARCEL ONLINE SHOP "SMART EXPRESS": AWARD IN THE FIELD OF GREEN LOGISTICS

Climate protection is close to our hearts! That is why a central element of our corporate philosophy is "Green Logistics". The individual corporate divisions are pursuing different projects in this regard. Our parcel online shop "Smart-Express", which enables the safe, fast and reliable dispatch of parcels and mail from Germany, Belgium, the Netherlands and Austria to Armenia, was recently awarded a certificate by one of our partners (GLS) for its active participation in the "KlimaProtect" programme. This involves offsetting all CO2 emissions generated during parcel transport by investing in an externally certified forest protection and reforestation project (VCS/CCB standard). We are proud to make a significant contribution to a more sustainable and environmentally friendly (transport) world!



QUALITY MANAGEMENT ISO 9001:2015: ECL PASSES EXTERNAL SURVEILLANCE AUDIT AGAIN



As every year, an external monitoring audit of our quality management system was carried out in 2022, which we passed with flying colours. No deviations were found. Our management system was confirmed as effective and compliant with standards. ECL Managing Director *Jörg Ullrich* was already looking ahead:

"As always, there are things to improve that we will work on to further enhance the quality of our services."



UPCOMING EVENTS

TAG DER SCHIENE 2022

On "Tag der Schiene", the entire industry shows what it is made of with numerous decentralised events. We at ECL are also taking part in "Tag der Schiene" together with the LPA, the LHG, BRG and our sister NRS.

The aim is to present the diverse professions and fields of work, as well as vehicles, tools and equipment. A vehicle show, a locomotive simulator and a workshop tour are among the attractions on offer. The "railway culture" will

also be brought closer by means of trips with nostalgic trains in the port of Lübeck. If you are looking for more information or would like to learn more about the "Tag der Schiene", simply visit the official website: <https://www.tag-der-schiene.de>



German-Finnish Port Day 2022

The German-Finnish Port Day 2022 will take place on Tuesday, 4 October 2022 at 5.30 p.m. in the Musik- und Kongresshalle Lübeck, Willy-Brandt-Allee 10, 23554 Lübeck, as an attendance event. The doors for guests will open at 4.45 pm. Further information as well as the complete programme schedule can be found on the website <https://www.ihk.de/schleswig-holstein/international/honorarkonsulat-finnland/veranstaltungen2-4175764>.

04
10
2022

SAVE
THE DATE

*Deutsch-Finnischer
Hafentag 2022*
*in der Musik- und Kongresshalle
zu Lübeck*

Hafenrede / Port Speech 2022
Juha Hakala
Managing Director

DEUTSCH-FINNISCHER HAFENTAG
GERMAN-FINNISH PORT DAY 2022

LÜBECKER
HAFEN-
GESELLSCHAFT
mbH

Honorarkonsul von Finnland
Lübeck

Hansestadt LÜBECK



logRegio
Branchennetzwerk der Logistik für die Region Lübeck e.V.



SAVE THE DATE: 18. August 2022 • ab 13.00 Uhr • media docks Lübeck
 Impuls • Exkursion • Live-Präsentation • Panel • Festabend
 Ihre persönliche Einladung erhalten Sie im Juli 2022
www.logRegio.de



ECL - EVEN CLEVERER LOGISTICS



FROM THE ECL FAMILY...

Growth in the Intermodal Transport Department

Frank Dittmann joined our Intermodal Transport department on 01.05.2022.

We extend a warm welcome to *Frank* and wish him every success with us in the ECL family.



Anniversaries

Three reasons to celebrate:

Katrin Westmann, Head of Department General Forwarding, FTL, LTL, Contract Logistics Paper & Wood, celebrates her 30th anniversary with the company on 01.08.2022.

Mirco Göpfert from our "Logistic Service Center Central Europe" department can also look back on 30 years with the company on this day.

The third 30-year company anniversary is celebrated by *Swenja Queiß* from our "Accounting" department.

We congratulate all three on a total of 90 years with ECL.

