



ISSUE 2 / 2025

NEWSLETTER



The official Newsletter of European Cargo Logistics GmbH

CONTENTS OF THIS ISSUE:

News from the different areas:

- **Intermodal services**
- **General forwarding**
- **Paper and forest product logistics**
- **ECL-News**

STRONG CONNECTIONS

...in an eventful autumn

For us, autumn is all about growth and networking. Our AUSTRIA SHUTTLE offers impressive new connections for even more efficient transport between northern and southern Europe. There is also a lot happening in Lübeck: the track extension and additional crane are expanding capacity at the intermodal location and creating new prospects for environmentally friendly logistics solutions.

In addition, our diverse LTL solutions demonstrate how flexible and efficient modern transport can be today. And, of course, we can look back on numerous exciting trade fairs that have provided valuable inspiration and new contacts for the future. As always, we hope you enjoy reading our autumn edition!





INTERMODAL SERVICES

AUSTRIA SHUTTLE - EXPANSION OF THE NETWORK



AUSTRIA SHUTTLE

- ✓ Lübeck - Wels v.v. in 30 hours
- ✓ Perfect ongoing connections, both in Wels (southern Germany, Austria, Italy, Turkey, Hungary) and in Lübeck (Scandinavia / Baltic States)
- ✓ Transport of intermodal trailers, dangerous goods, all types of containers and non-craneable trailers

AUSTRIA SHUTTLE remains on course for success! The connection between Lübeck and Wels has continued to develop dynamically in recent months. With the addition of Budapest, another important hub in the European intermodal network has been successfully integrated – and growth continues: in addition to connections to Trieste (Italy), for example, our partners now also offer connections to Greece and Turkey.

This strengthens AUSTRIA SHUTTLE's role as an efficient and sustainable link between northern and southern Europe – with excellent prospects for the future.

For more information, please visit our website: www.ecl-online.de or contact our intermodal transport team.

EXPANSION OF THE LÜBECK INTERMODAL HUB

With the extension of the track system and the installation of a third high-performance gantry crane, further investments are being made in the future viability and performance of the intermodal location in Lübeck. The expansion not only ensures significantly higher handling capacity, but also even more efficient processes in daily terminal operations – an important step in meeting the ever-growing demand for environmentally friendly transport solutions.

The official celebrations to mark the commissioning of the new facilities will take place on 27 October 2025. Together with LHG and our partners, we look forward to celebrating this important milestone for Lübeck as a logistics location.



ECL - EVEN CLEVERER LOGISTICS



INTERMODAL SERVICES

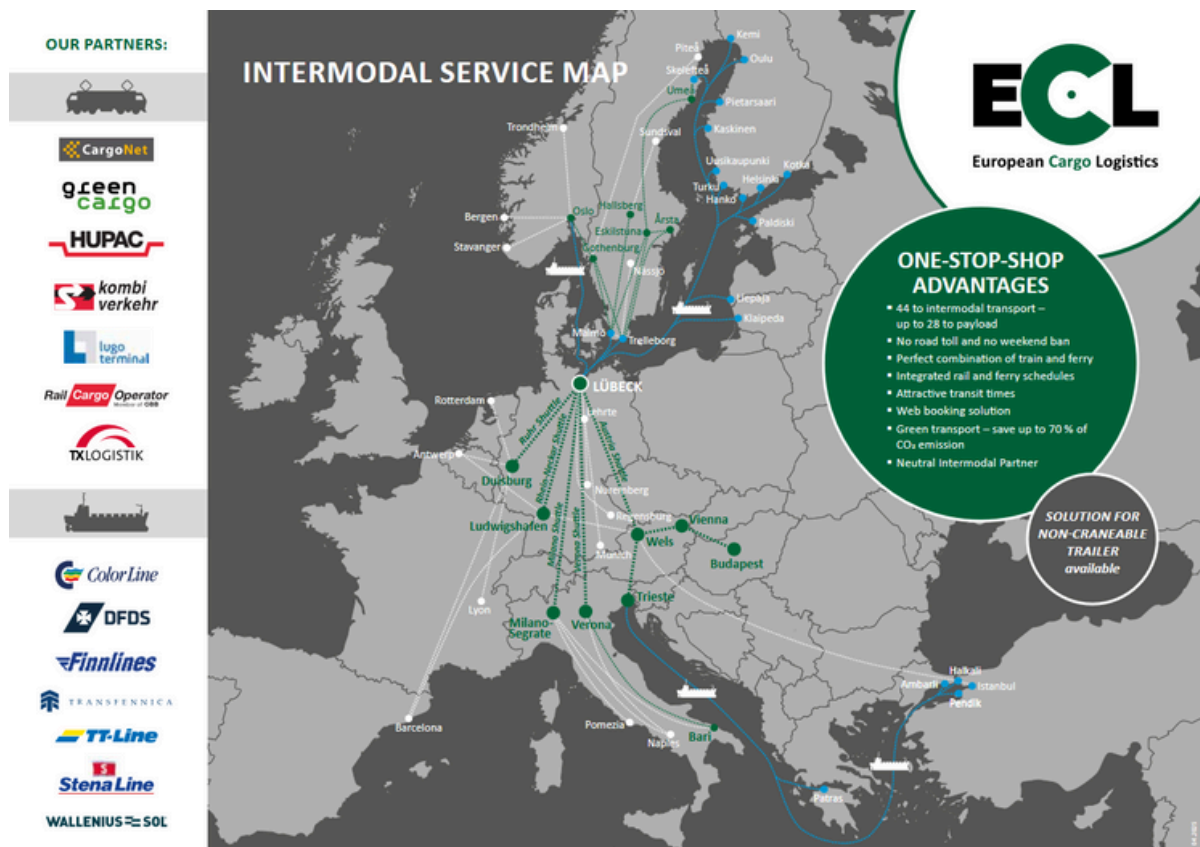
ECL INTERMODAL SERVICES 2025 – READY FOR THE FUTURE OF LOGISTICS!

With our **one-stop shop network** and optimised timetables, we at *European Cargo Logistics GmbH* connect key European regions via Lübeck – efficiently, sustainably and reliably. Here is a small selection of our highlights:

- Extensive rail and ferry network perfectly combined
- Attractive transit times
- One-stop shop service including non-craneable trailers
- Up to 70% CO₂ reduction through green transport solutions

Whether Scandinavia, the Baltic States, Central or Southern Europe – we will take your cargo where it needs to go. Download our 2025 timetable and let us plan your next shipment!

For more information, please visit our website: www.ecl-online.de or contact our intermodal transport team.



ECL - EVEN CLEVERER LOGISTICS



GENERAL FORWARDING

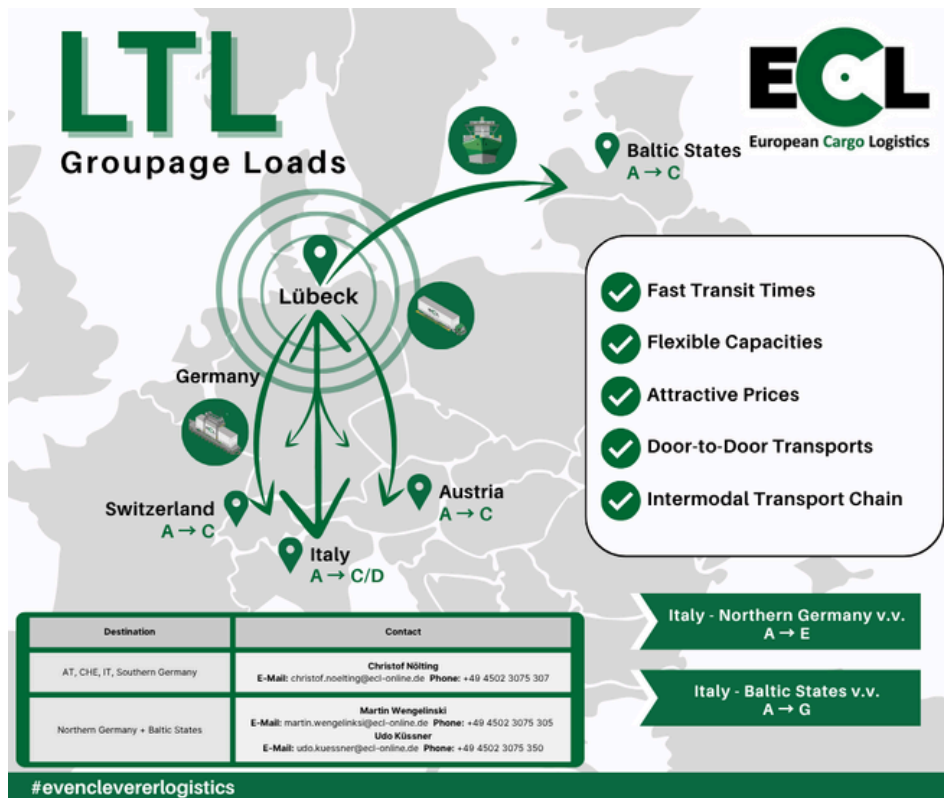
LTL: EFFICIENT GROUPAGE LOADS WITH ECL

LTL – three letters that make your supply chain more efficient. With our less truck load solutions, we offer tailor-made groupage loads for northern Italy, Germany, Austria, Switzerland and the Baltic states – reliably, quickly and flexibly. Our weekly departures from Verona and the central transshipment points in Lübeck enable short transit times and precise planning of your transports. We also serve the entire Baltic region via Liepaja.

Your advantages at a glance:

- Short transit times: from Verona to northern Germany in 4 days, to the Baltic States in 6 days
- Flexible capacities for individual transport requirements
- Advance deliveries possible from all over northern Italy
- Door-to-door transport including intermodal connections (road, rail, ship)
- Attractive prices with maximum planning security

European Cargo Logistics GmbH is your reliable partner when it comes to LTL groupage loads – with a personal contact person, a clear structure and a service that takes the strain off your supply chain.



For further information about our LTL groupage loads, please visit our website or simply contact us:

Website: <https://www.ecl-online.de>

E-Mail: martin.wengelinski@ecl-online.de or udo.kuessner@ecl-online.de

ECL - EVEN CLEVERER LOGISTICS



PAPER AND FOREST PRODUCT LOGISTICS

EFFICIENT LOGISTICS CHAIN FOR WOOD PRODUCTS – FROM TYROL TO FINLAND

We organised the transport of high-quality glulam beams from the factory in Jenbach (Austria) to Finland for one of our customers. The impressive timber packages, measuring up to 20 metres in length, were first transported by rail to Travemünde using the AUSTRIA SHUTTLE service. There, *Lübecker Hafen-Gesellschaft (LHG)* took over the transshipment of the glulam beams onto Mafis before they were shipped on to Oulu (*Wallenius SOL*).



The final stage of the journey took the timber products to Lieksa, where they reached their destination. Here, they will now be used to construct a new office building made entirely of wood. This is an example of smooth processes and perfectly coordinated logistics chains – from the Alpine region to the far north of Europe.

ECL-NEWS

BREKKBULK EUROPE 2025 – SUCCESSFUL DAYS IN ROTTERDAM



From 13 to 15 May 2025, it was that time again: *European Cargo Logistics GmbH* was present at **Breakbulk Europe** in Rotterdam – together with numerous partners at the joint stand of the Port of Hamburg.

As in previous years, the trade fair provided the perfect platform for exchanges with customers, project partners and industry colleagues from all over Europe and beyond. Whether classic project cargo, individual logistics concepts or new cooperation ideas – the discussions were varied, practical and forward-looking. A particular highlight was the strong interest in multimodal transport solutions from the Lübeck location and in tailor-made solutions.

The trade fair has once again demonstrated that there is a great need for well-thought-out, sustainable transport concepts for goods of all kinds – and ECL is ideally positioned to meet this need. We would like to express our gratitude for three wonderful days in Rotterdam, for the many exciting discussions, the positive feedback and the new ideas. Special thanks also go to our numerous partners on site.

ECL - EVEN CLEVERER LOGISTICS



ECL-NEWS

FEHMARN-BELT-DAYS 2025 - IN THE HEART OF LÜBECK

From 15 to 16 June, **Fehmarnbelt Days 2025** took place at the **Music and Congress Hall in Lübeck**, in the heart of the Hanseatic city. A meeting place for thought leaders, decision-makers and interested parties from the Fehmarnbelt region and beyond. ECL Managing Director *Jörg Ullrich* also took part in the event as a moderator and speaker as part of the interesting and varied programme.



Jörg Ullrich successfully moderated the panel discussion on the exciting topic of **'Relocation Potentials and Cooperation Scenarios for Combined Cargo Transport after the Opening of the Fixed Fehmarnbelt Link'**. We would like to thank all participants and, of course, everyone who took an interest in the stimulating exchange of ideas, and we hope to see you all again next year.

FUTURE SHIPPING LULEÅ

On 7 May 2025, the **Future Shipping Luleå** event took place. This event focused on the prerequisites for a functioning shipping industry in Northern Europe. The successful event was an important meeting place where industry players and decision-makers came together to discuss development opportunities and challenges.



ECL-NEWS

REVIEW OF TRANSPORT LOGISTIC 2025 IN MUNICH

From 2 to 5 June 2025, *European Cargo Logistics GmbH* was represented at the leading international trade fair **transport logistic** in Munich – and we can look back on a successful week at the fair.

At the **Port of Lübeck's** joint stand, we welcomed numerous existing partners and made many new contacts from Germany and abroad. The great interest in combined transport solutions and sustainable logistics concepts was evident at all levels.

The focus was particularly on our current intermodal connections from Lübeck and individual logistics concepts for Scandinavia, the Baltic States and Southern Europe. Many visitors also showed great interest in the possibilities for transporting non-craneable trailers and the CO₂ reduction potential offered by intermodal solutions.



Our highlight, the 'Lübeck Day', was a very special experience for all of us, including an incredible number of informative conversations and lively discussions.

Our conclusion: **transport logistic** 2025 has once again demonstrated how important personal exchange is in the industry – and that interest in innovative, efficient and sustainable transport solutions continues to grow.

We would like to thank all visitors for the exciting discussions and look forward to continuing them after the trade fair!



ECL - EVEN CLEVERER LOGISTICS